

MONTHLY MEMBERSHIP PROGRESS REPORT

LOCATION FLORIDA

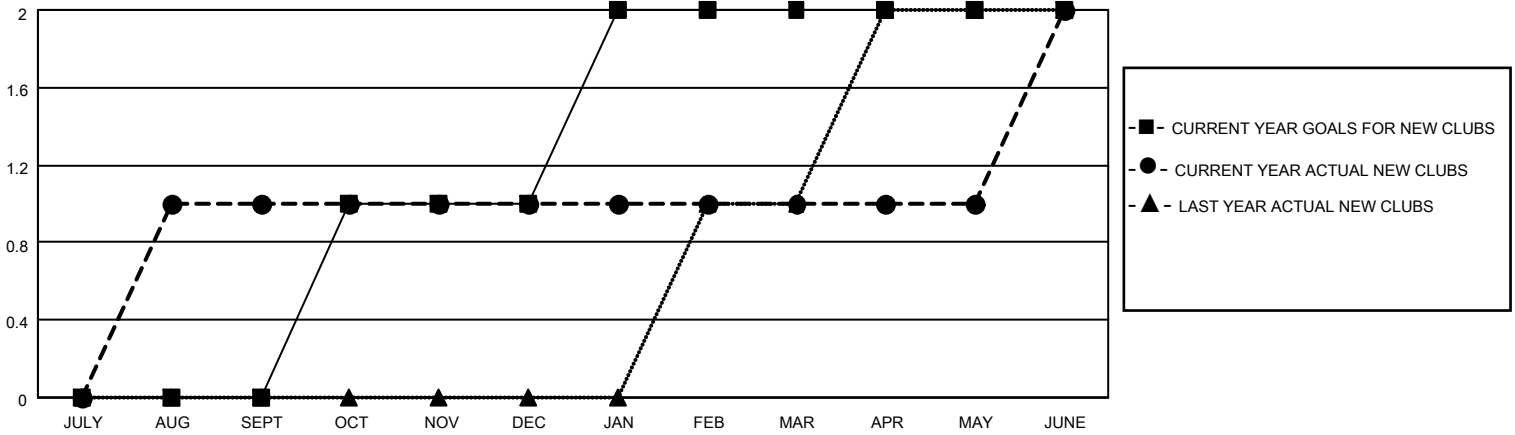
District 35 N

Results as of: 6/30/2023

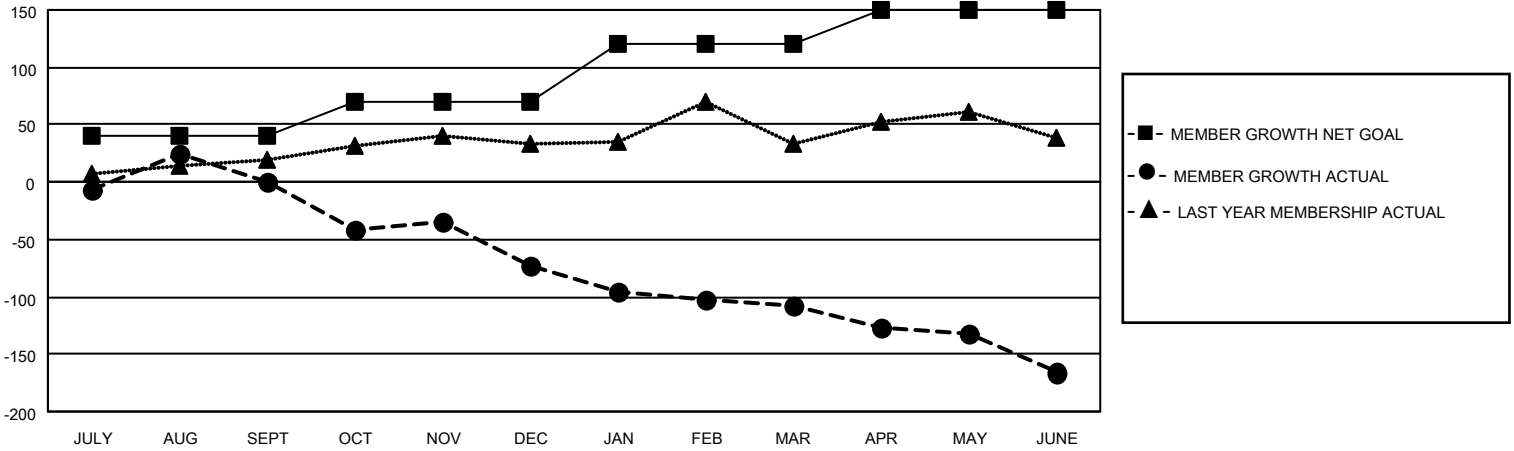
Clubs			
RESULTS FOR 2022-2023			
QUARTER	NEW CLUB GOAL	NEW CLUBS	DROPPED CLUBS
JULY/AUG/SEPT	0	1	0
OCT/NOV/DEC	1	0	1
JAN/FEB/MAR	1	0	1
APR/MAY/JUNE	0	1	2

Members			
RESULTS FOR 2022-2023			
QUARTER	MEMBER GROWTH NET GOAL	MEMBER GROWTH ACTUAL	DROPPED MEMBERS ACTUAL (including transfers)
JULY/AUG/SEPT	40	105	87
OCT/NOV/DEC	30	47	117
JAN/FEB/MAR	50	50	73
APR/MAY/JUNE	30	71	126

GOALS AND ACTUAL NEW CLUBS CUMULATIVE



GOALS AND ACTUAL MEMBERS CUMULATIVE



DROPPED CLUBS: 4

36 CLUBS OF 59 ADDED 1 OR MORE NEW MEMBERS

GENDER DISTRIBUTION

MALE	623 (50.32%)
FEMALE	615 (49.68%)
NON BINARY	0 (0.00%)
PREFER NOT TO ANSWER	0 (0.00%)

DROPPED MEMBERS

DECEASED	18
CLUB CANCELLED	27
OTHER	360
TOTAL	405

[CLICK HERE FOR CUMULATIVE MEMBERSHIP DATA](#)

TOTAL FAMILY UNIT MEMBERS	233
FAMILY MEMBERS PAYING HALF DUES	122